



Multiple Application Platform Server

## MAPS 6.7 Release Guide

*Product version 6.7*

*Last updated 7/29/2021*

# Trademark, Publishing Statement, and Copyright Notice

---

© 1998-2021 Evisions. All rights reserved.

This software and related documentation are provided under a license agreement containing restrictions on use and disclosure and are protected by intellectual property laws. No part of this document may be reproduced, stored in or introduced into a retrieval system, or transmitted in any form or by any means (electronic, mechanical, photocopying, recording, or otherwise), or for any purpose, without the express written permission of Evisions.

The information contained herein is subject to change without notice and is not warranted to be error-free. Product features referenced herein for a period of time may not match product contents. Evisions does not warrant that the functions contained in the software will meet your requirements or that the operation of the software will be uninterrupted or error free. Evisions reserves the right to make changes and/or improvements in the software without notice at any time.

This software and documentation may provide access to or information on content, products, and services from third parties. Evisions and its affiliates are not responsible for and expressly disclaim all warranties of any kind with respect to third-party content, products, and services. Evisions and its affiliates will not be responsible for any loss, costs, or damages incurred due to your access to or use of third-party content, products, or services. Evisions does not endorse the content or developer of any products or web sites mentioned.

All information in this guide is designed for instructional purposes only. Evisions makes no guarantees regarding the accuracy or performance of any techniques used in this guide. Software configurations and environments may vary, and some techniques used in this guide may not operate efficiently under all configurations. This guide may contain examples of various technologies or products, which are the sole property and responsibility of their creators.

Trademarks are the property of the respective owners for any products mentioned herein.

# Table of Contents

---

<b>What's New in MAPS 6.7?</b> .....	<b>4</b>
MAPS Updates .....	4
Product versions .....	4
Installation .....	4
1. Prepare test environment and ensure current backup .....	4
2. Check for updates .....	4
3. Allow update process to complete .....	5
4. Verify the latest version is installed .....	5
<b>DORIS Connector</b> .....	<b>6</b>
<b>DORIS Connector Configuration</b> .....	<b>7</b>
Driver Properties .....	8
<b>Using the DORIS Connector in Argos</b> .....	<b>10</b>
Snapshot Definition .....	10
<b>DORIS Snapshot Definition Examples</b> .....	<b>14</b>
Simple Snapshot Definition .....	14
Snapshot Definition for Multiple Entities .....	14
Snapshot Definition Using a Variable .....	14
Snapshot Definition Using Tags .....	15
<b>MAPS 6.7 Release Notes</b> .....	<b>16</b>
<b>Getting Help</b> .....	<b>17</b>
Can't find what you're looking for? .....	17

# What's New in MAPS 6.7?

---

Evisions is pleased to announce the release of MAPS version 6.7, which includes the following changes:

- The new Evisions DORIS Connector option allows for reporting off of DORIS data, including snapshot data, for use in DataBlocks and reports.
- Updated the workflow for adding and editing printers for better usability.
- The Check For Updates window now includes new recommendation messages for important updates.
- Users authenticating with OAuth2 in 64-bit MAPS Config REST Connector, with HTTPS On Callback set as True were experiencing an access violation.
- Searching for LDAP users with TLS enabled was causing the MAPS Configuration Tool to become unresponsive and crash.
- Additional enhancements and resolved issues.

We appreciate the feedback received from all of our users. Our products would not be what they are today without your continued support. If you have any comments or suggestions, please do not hesitate to [open a case with the HelpDesk](#) and let us know.

## MAPS Updates

---

MAPS 6.7 is an update to the MAPS service (which includes the eLauncher) and the MAPS Config. You should upgrade both components concurrently.

### [Product versions](#)

The latest versions of MAPS included in this release are:

- MAPS service 6.7.0.2490 / MAPS Config 6.7.0.1372 / eLauncher 6.7.0.21

## Installation

---

### [1. Prepare test environment and ensure current backup](#)

We highly recommend installing updates in a test environment before applying them to your production environment. You should make sure that a current backup is available in case of any unforeseen issues. To create a full backup of your MAPS environment, go to the **Server -> Backups** screen in MAPS and click **Backup Now**.

### [2. Check for updates](#)

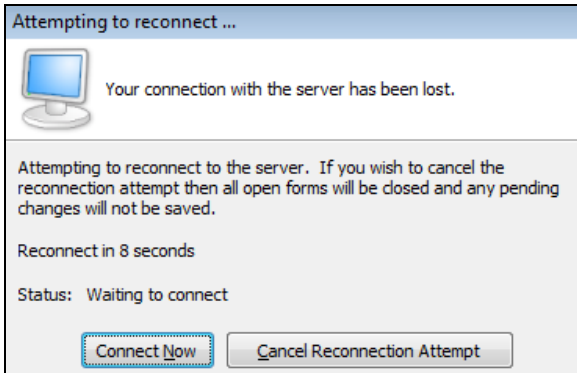
Click the **Check for Updates** button in the MAPS Configuration tool to view available updates.

If you need to apply earlier updates prior to the 6.7 update, please refer to the appropriate [release guide\(s\)](#) before proceeding.

It is possible to apply updates when users are on the system; however, to avoid the possibility of losing unsaved work we recommend applying updates during off hours.

### [3. Allow update process to complete](#)

When applying updates to the MAPS service you will be temporarily disconnected from the server:



The update process may take a few minutes to complete. **Do NOT cancel the reconnection attempt or manually restart the server.** You will automatically be reconnected to the server once the update has been applied.

### [4. Verify the latest version is installed](#)

To ensure that you are on the most current version, continue clicking the **Check for Updates** button and applying the updates until no new updates are available.

## Please Provide Us with Your Feedback!

---

As always, we welcome any [feedback or suggestions](#) you may have. We very much appreciate your thoughts and suggestions, so please keep the great ideas coming!

# DORIS Connector

---

The DORIS Connector is a data connection that allows you to connect to and write queries against your Evisions DORIS data.

The DORIS Connector:

- Allows for reports in Argos to be generated from DORIS data.
- Can be configured to return snapshots within a specified date range.

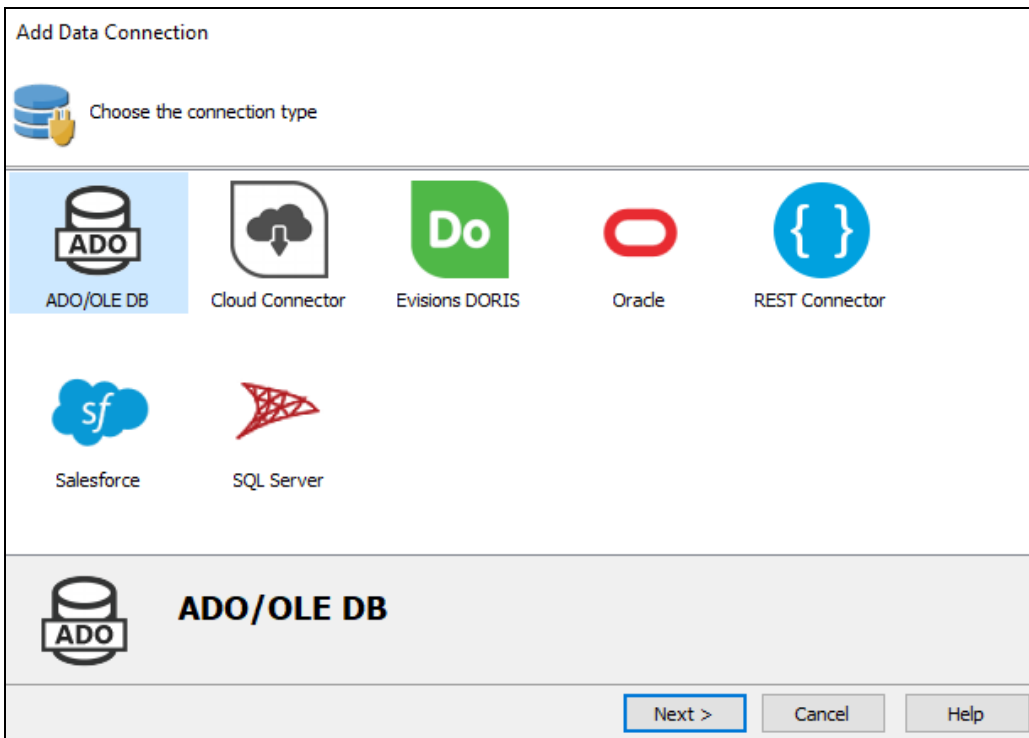
[DORIS Connector Configuration](#)

[Using the DORIS Connector in Argos](#)

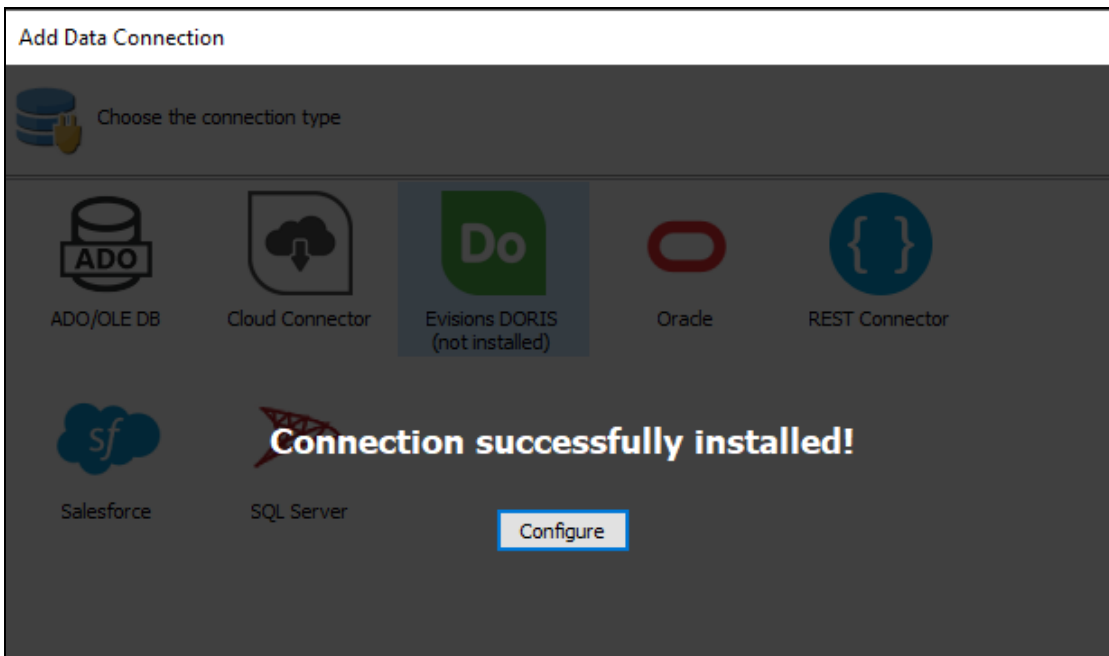
[DORIS Snapshot Definition Examples](#)

# DORIS Connector Configuration

On the **Data Connections** screen in MAPS Config, select **Add Connection**. Choose **Evisions DORIS** from the list of data connection types.




Select the **Install** button to download and install the driver.



When installation is complete, select **Configure** to configure the data connection properties.

On the **General** screen, enter a descriptive name for the data connection, and any desired notes.

**Add Data Connection**

 Edit the properties of this data connection

- General
- Driver Properties
- Query Properties
- SQL Formatting
- User/Group Rules
- Queuing Rules
- Scripts
- Connection Established

Connection Name  
DORIS Connection

Connection type: Evisions DORIS ([Change](#))

Created by: anthony

Created date: 6/23/2021 10:29:55 AM

Modified by: anthony


Modified date: 6/23/2021 10:29:55 AM

Notes  
Data connection to Evisions DORIS.

[View Details](#)

## Driver Properties

**Add Data Connection**

 Edit the properties of this connection that are specific to the chosen driver

- General
- Driver Properties
- Query Properties
- SQL Formatting
- User/Group Rules
- Queuing Rules
- Scripts
- Connection Established

Key	Value
Client ID	
Client Secret	●●●●●●●●
Logging	Off

On the **Driver Properties** screen, enter the following parameters:

- **Client ID** - A unique identifier that is generated during the registration process.
- **Client Secret** - A password-like value specific to MAPS that is generated during the registration process. This value needs to remain secure.



- **Logging** - The level of logging for this connection. Choose from Off (no logging), or On (adds cache queries, HTTP headers, request/response bodies, SSL negotiation, and additional details that may be helpful in troubleshooting). Logs are saved in the **C:\Program Files\Evisions\MAPS\Service\Logs** directory for 64-bit MAPS, or **C:\Program Files (x86)\Evisions\MAPS\Service\Logs** directory for 32-bit MAPS, and can be viewed on the Logging > Logs screen in MAPS Config.

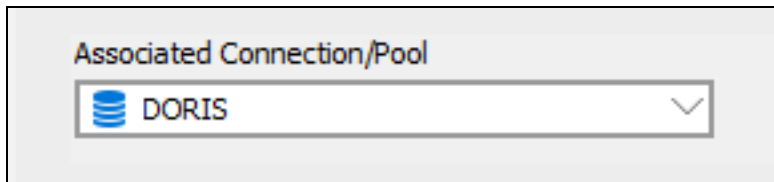
Once you're parameters are filled, select **Authenticate** to open the DORIS sign-in page, and provide your Evisions DORIS credentials to sign in.

# Using the DORIS Connector in Argos

---

Argos can be used to create a dashboard and report off of Evisions DORIS data, as well as DORIS snapshot data. Using these snapshots in Argos allows you to query against current snapshot data, or against data as it appeared at a specified date through use of a snapshot definition.

To use the Evisions DORIS Connector in Argos, create a DataBlock and then select the DORIS Connector data connection in the **Associated Connection/Pool** dropdown.



You can now use the Evisions DORIS Connection in your queries. This could be in the Visual Designer, free type report query, multi-column list boxes, or in any other location where you can use SQL in Argos.

## Snapshot Definition

---

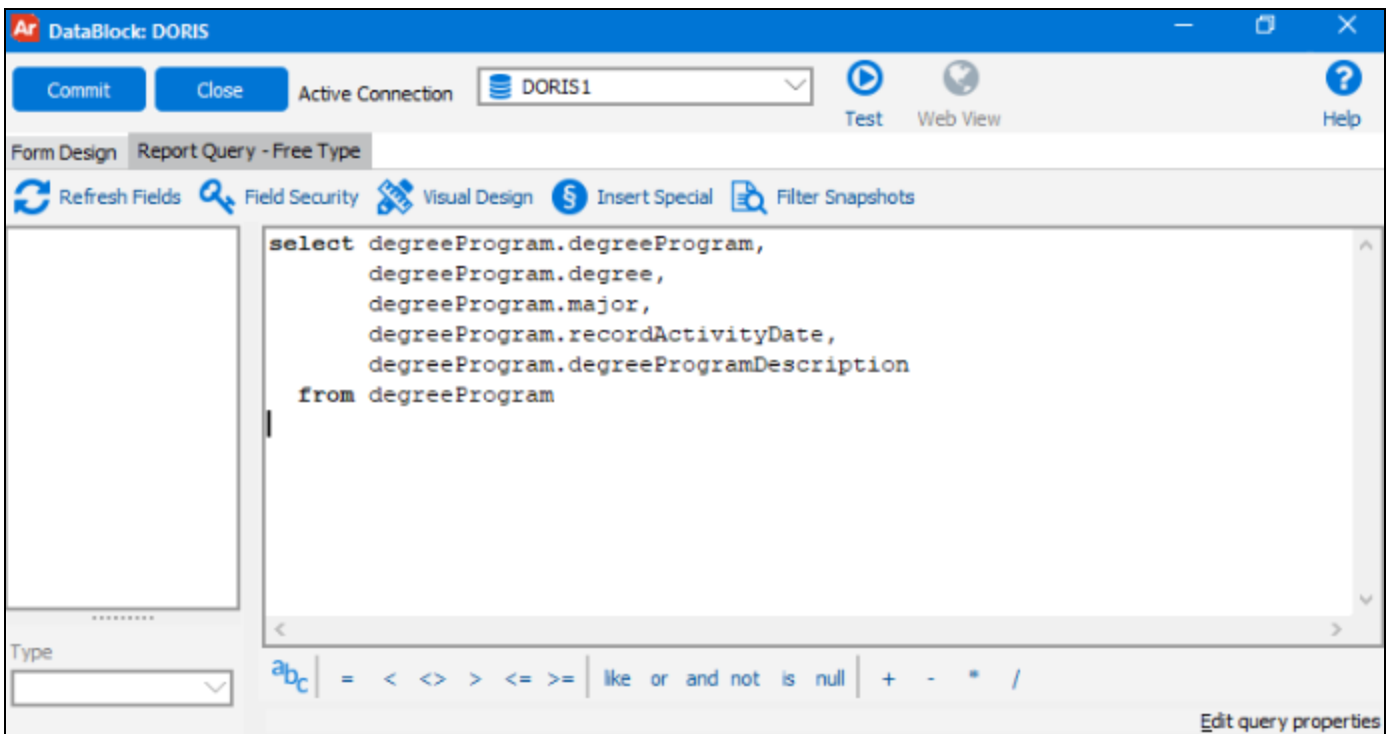
A snapshot definition is used when you wish to further filter the data sets being retrieved by your query. This is useful when generating reports based on archived data that was captured within a specific date range. You can also filter for one or more tags, which act as key-words when identifying what sort of data you wish returned.

### *DORIS Snapshots*

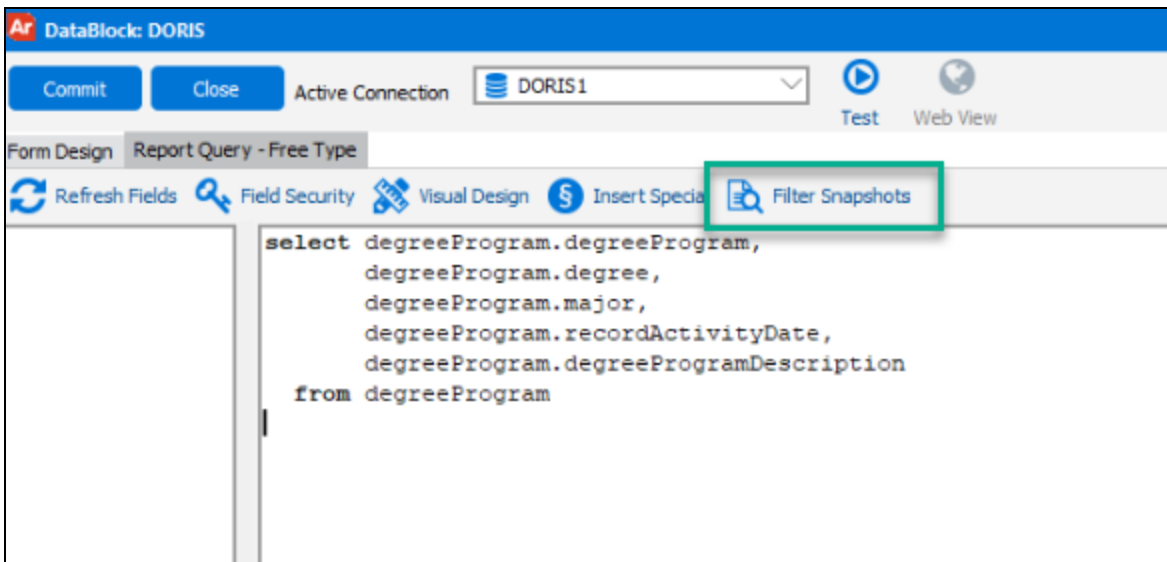
Evisions DORIS allows you to take a "snapshot" of the data in your data source at a specific date, and save that snapshot for later use. Each snapshot is identified by the creation or census date of when the snapshot was taken. For more information on snapshots, please see the [Evisions DORIS in-product help](#).

The following example shows how a query might look in the Free Type report query editor:

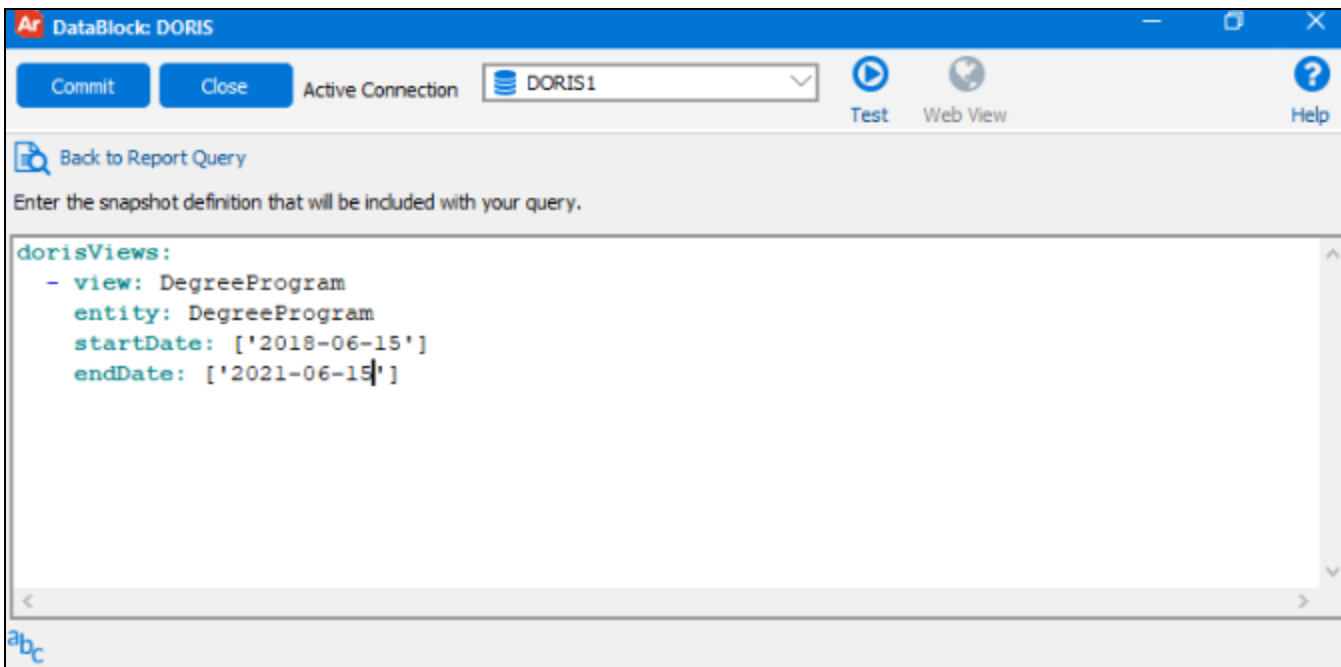
Enter your Free Type query into the text field.



At this point you may choose to further filter your data by inputting a snapshot definition. To do so, first select the **Filter Snapshots** button.



Though optional, this step allows you to further refine the results of your query. Here are a few [examples of snapshot definitions](#).



The following elements may be used within the snapshot definition:

- **dorisViews** - the required root element to begin a snapshot definition.
- **view** - the name of the view/table used within your Argos query.
- **entity** - the name of the entity from within DORIS.
- **tags** - this is a user-defined key-word(s) created to identify a snapshot for surveys or other purposes. Specifying tags within the snapshot definition filter can help to further narrow the snapshots returned within a result set. Note that the use of multiple tags must be enclosed in brackets.
- **startDate** - the beginning date of the desired snapshot range. This date must be in the "yyyy-MM-dd" format.
- **endDate** - the end date of the desired snapshot range. This date must be in the "yyyy-MM-dd" format.

Variables can be used for values within the snapshot definition. They can be free-typed or inserted by selecting the user-defined variable icon to display a list of System Variables that can be added to your snapshot definition.

Validate and test the query to ensure that you are getting back the expected results:

Retrieve a maximum  record(s) Get Close

degreeprogram	degree	major	recordactivitydate	degreeprogramdescription
> IGETC_SBCC	AS	AA	1/25/2010	(IGETC) Transfer Cur
IGETC_SBCC	AS	ECON	1/25/2010	(IGETC) Transfer Cur
IGETC_SBCC	AS	ENGL	1/25/2010	(IGETC) Transfer Cur
IGETC_SBCC	AS	HIST	1/25/2010	(IGETC) Transfer Cur
ELEC_INDS	CERT	IELE	1/25/2010	Electrician: Indus.
BUS_CERT	CERT	ECON	1/25/2010	Business Certificate
BA-LIFE	BA	LIFE	1/25/2010	Life Sciences
AS	AS	SPRT	6/30/2015	Associate in Science
PLP	CERT	EMPD	1/25/2010	Professional Leaders
ECE_GR4_GEN	BA	EDUC	1/25/2010	ECE Grade 4 Generali
MBA	MBA	SPRT	6/18/2014	Master Business Admi
PHD	PHD	SPRT	1/25/2010	Doctor of Philosophy
MA	MA	SPRT	3/12/2010	Master of Arts
JD	JD	SPRT	1/25/2010	Law (J.D.)
AA ENGL HNRS	AA	ENGL	1/25/2010	AA English with Hono
MA_ARTHIST	MA	ART	9/14/2012	Graduate Art History
MA_ARTHIST	MA	HIST	1/25/2010	Graduate Art History
TEACHERCERT	PROCER	TCER	1/25/2010	Approved Teacher Pre

10000 rows

# DORIS Snapshot Definition Examples

---

## Simple Snapshot Definition

---

The simplest snapshot definition provides a view name, identifies the DORIS entity, and provides a date range by specification of a start and end date. For example, a query for the DegreeProgram data from May, 2020 might look like this:

```
dorisViews:  
- view: DegreeProgram  
  entity: DegreeProgram  
  startDate: '2020-05-02'  
  endDate: '2020-05-03'
```

- DegreeProgram is used to name the view, and is also the name of a DORIS entity.
- startDate is the beginning of the date range.
- endDate is the end of the date range.

This will return all snapshots for the DegreeProgram entity collected between those dates.

## Snapshot Definition for Multiple Entities

---

To collect the data for two or more different entities, you can use a snapshot definition that contains more than one view. This example returns snapshots for the DegreeProgram and Degree entities that meet the date range criteria:

```
dorisViews:  
- view: DegreeProgram  
  entity: DegreeProgram  
  startDate: '2020-05-02'  
  endDate: '2020-05-03'  
- view: Degree  
  entity: Degree  
  startDate: '2021-06-22'  
  endDate: '2021-06-23'
```

Note that the date ranges do not need to be the same, however in most cases you will want them to be the same.

## Snapshot Definition Using a Variable

---

If you define a variable in **Where** you can use that variable for either the beginning or the end of the date range.

For example, if you define a variable **DateEdit1**, you can use that variable instead of a specific date:

```
dorisViews:
- view: DegreeProgram
  entity: DegreeProgram
  startDate: :DateEdit1
  endDate: '2020-05-03'
```

## Snapshot Definition Using Tags

---

Tags are optional, user-defined key-words created to identify a snapshot for surveys or other purposes. Specifying tags within the snapshot definition filter can help to further narrow the snapshots returned within a result set.

```
dorisViews:
- view: DegreeProgram
  entity: DegreeProgram
  tags: 'Fall Census'
  startDate: '2020-05-02'
  endDate: '2020-05-03'

dorisViews:
- view: DegreeProgram
  entity: DegreeProgram
  tags: ['Fall Census', 'Spring Census']
  startDate: '2020-05-02'
  endDate: '2020-05-03'
```

Though most often used to narrow snapshot results, multiple tags may also be used to return all snapshots that carry all specified tags. If multiple tags are specified, they must be enclosed in brackets.

# MAPS 6.7 Release Notes

MAPS Service 6.7.0.2490 / MAPS Config 6.7.0.1372 / eLauncher 6.7.0.21

## MAPS

### Enhancements

Area	Description	Issue number
DORIS Data Connections	Added the Evisions DORIS data connection type to MAPS Config.	MAPS-3063
DORIS Data Connections	Added a "Learn More" button to the Add Data Connection dialog for users selecting Evisions DORIS.	MAPS-3069
eLauncher	The Web Viewer and eLauncher no longer continuously checks to see if the user has logged in to another browser tab while logged out.	MAPS-3051
Log Files	Added a Stack Trace dump to the log files for improved access violation troubleshooting.	MAPS-2513
Log Files	Removed the Trace tag from the All logging string in order to improve logging stability.	MAPS-2512
Log Files	IP addresses of connections using a network proxy will now display the client's IP address in the log files and Inspector, with the proxy address appearing in parenthesis.	MAPS-3141
Printers	Updated the workflow for adding and editing printers in MAPS Config.	MAPS-3005
Product Updater	The Check For Updates window now includes new notifications when additional updates are recommended or required.	MAPS-2991

### Resolved Issues

Area	Description	Issue Number
64-bit	Users authenticating with OAuth2 in 64-bit MAPS Config REST Connector, with HTTPS On Callback set as True were experiencing an access violation.	MAPS-2979
Data Warehouse	Short date formats that begin with Day or Year were producing invalid date errors during Data Warehouse migration.	MAPS-1820
LDAP	Searching for LDAP users with TLS enabled was causing the MAPS Configuration Tool to become unresponsive and crash.	MAPS-872
Records	Some associated records of users that were deleted in MAPS were not being concurrently deleted from the mapplets.	MAPS-3155
REST Data Connections	Authenticating with OAuth2 to a REST data source, with Firefox set as the default browser, resulted in an error that blocked users from retrieving API access tokens.	MAPS-2515



# Getting Help

---

For information on using the software, please refer to the product Help, which contains detailed information on all aspects of the product.

If you are having problems with the installation or configuration, you can search our [support site](#), which includes a knowledge base of common issues. If you are unable to find the solution, submit a HelpDesk request with a detailed explanation of the problem you are experiencing.

Please do not hesitate to contact the Evisions HelpDesk if any questions or problems arise. We are here to help you and want to ensure your success.

## Can't find what you're looking for?

---

We would love to make our documentation better! If you have a moment to let us know what we missed or how we can make the help more useful, please email us at [TechDocs@evisions.com](mailto:TechDocs@evisions.com).